



CLIMB ON

RUNG CAP REPLACEMENT

READ THESE INSTRUCTIONS COMPLETELY BEFORE YOU START. IF YOU DON'T UNDERSTAND THESE INSTRUCTIONS, PLEASE CALL 800-453-1192 FOR ASSISTANCE.

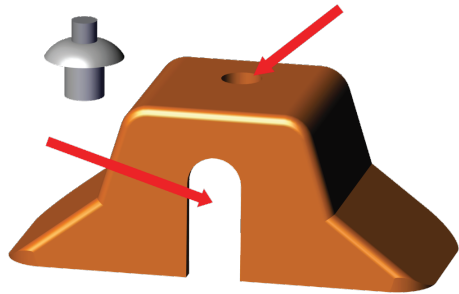
Procedure for replacing the Rung Caps on Little Giant Ladder Systems ladders and elevated enclosed platforms.

1. Failure to comply with all instructions may result in serious injury.
2. Make sure this kit is compatible with your ladder. Before installing this kit, identify all kit components. If any components are missing, damaged or if you have any questions concerning the use of this kit on Little Giant Ladder Systems products, please contact our Customer Experience Team at 800-453-1192. Do not substitute any components.
3. Inspect the ladder before installing this kit. Repair or replace any damaged or missing parts before using the ladder. Use only Little Giant Ladder Systems replacement parts. If you are unable to repair it, discard the ladder.

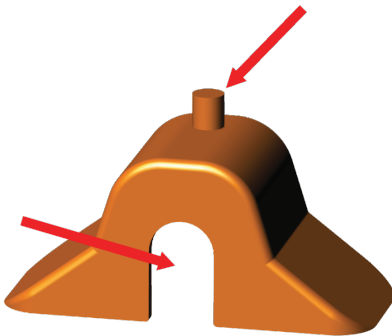
NOTE: IF ANY OTHER PART OF THE LADDER IS DAMAGED BEFORE OR DURING THE PROCESS OF INSTALLING AND/OR REPAIRING, PLEASE CONTACT OUR CUSTOMER EXPERIENCE TEAM FOR ASSISTANCE AT 800-453-1192.

DO NOT USE A DAMAGED LADDER!

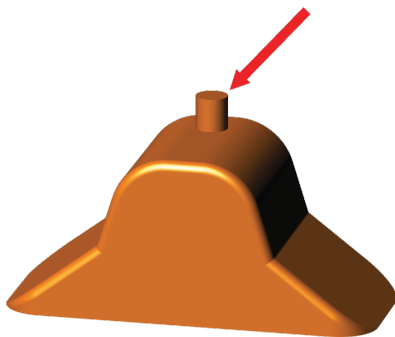
1. Identify the type(s) of rung caps included in kit using the features indicated by the arrows. If existing rung caps on ladder do not match ones included in kit please contact our Customer Experience Team at 800-453-1192.



SLOTTED WITH DRIVE RIVET
PAGE 3



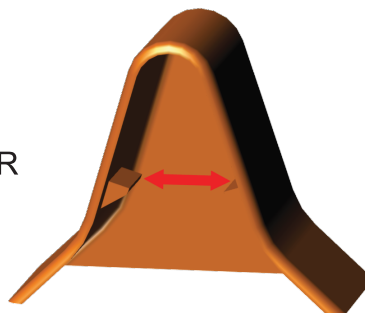
SLOTTED
PAGE 4



UNSLOTTED
PAGE 5



OR



SNAP-ON
PAGE 6

Slotted Rung Cap With Drive Rivet

TOOLS NEEDED

DRILL



HAMMER



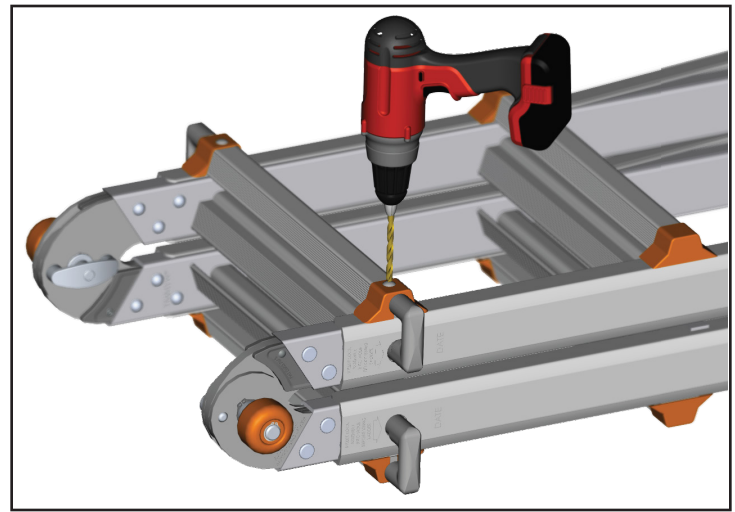
CHISEL



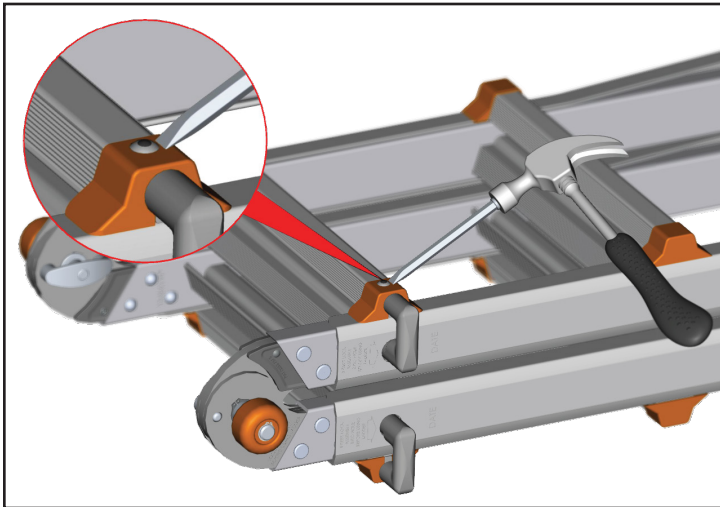
3/16" DRILL BIT



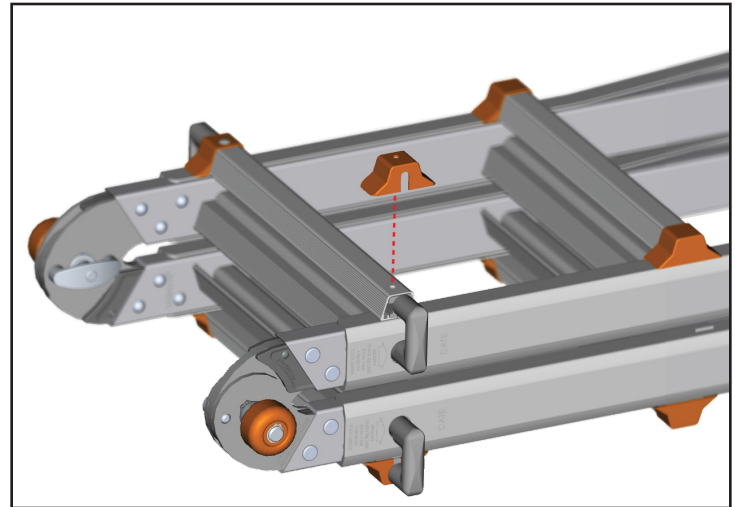
3/16" PUNCH



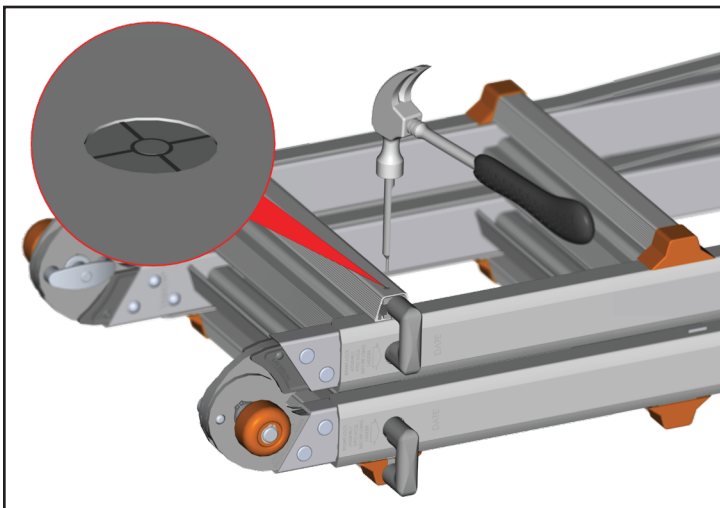
2. Using a drill and a 3/16" bit, drill through the center of the rivet head.



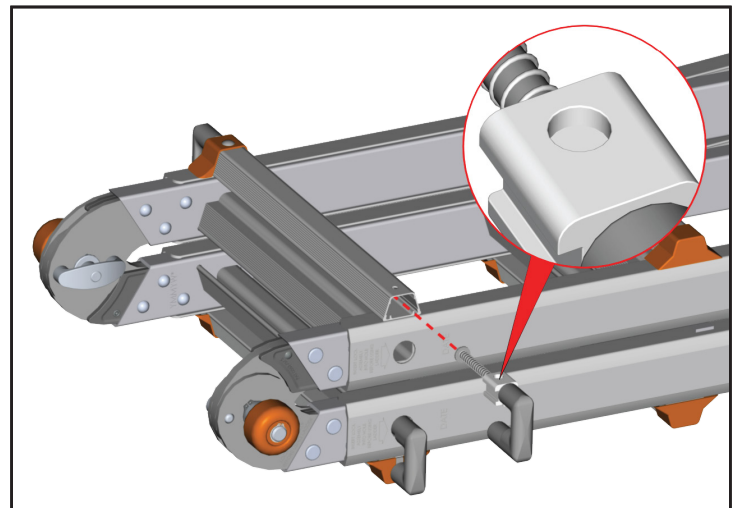
3. Using a hammer and a chisel, tap off the remainder of the rivet head.



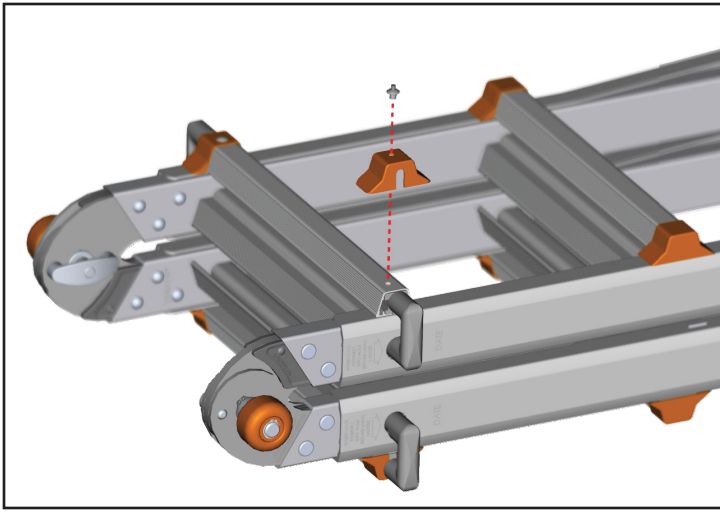
4. Remove and discard the old rung cap.



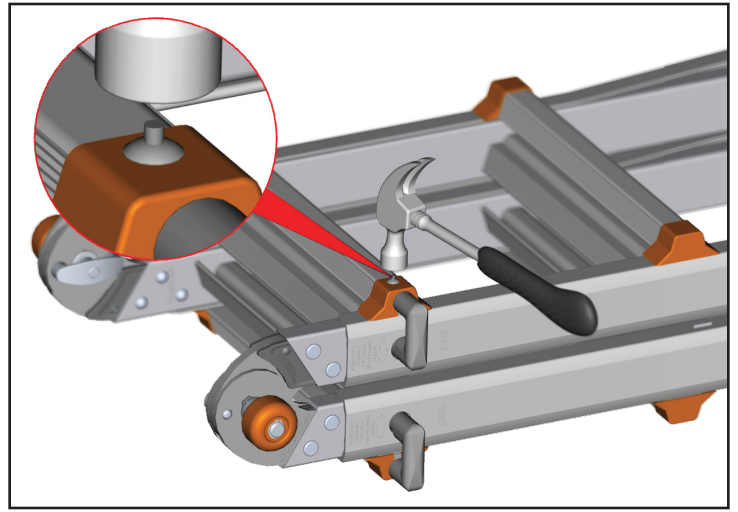
5. Using a 3/16" punch, carefully break up the rivet material left in the lock tab, then flip ladder over to dump out the pieces.



6. Turn ladder back over. If needed, pull the lock tab out of the rung and remove any remaining rivet peices, then slide lock tab back into place.



7. Insert the new slotted rung cap and drive rivet.



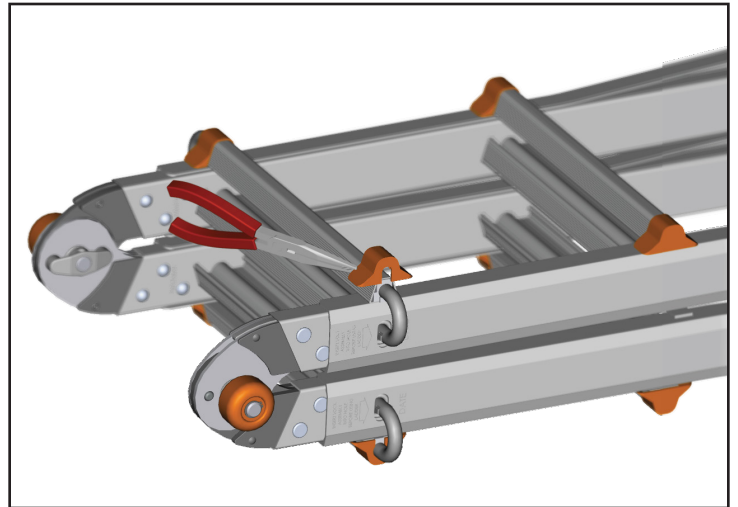
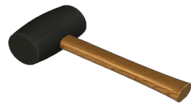
8. Using a hammer, strike the mandrel of the drive rivet until it is flush with the rivet head. Repeat steps for remaining rung caps.

Slotted Rung Cap

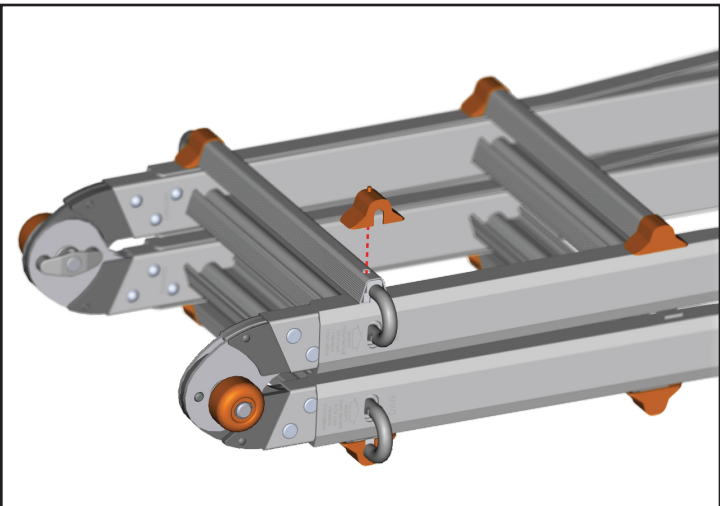
TOOLS NEEDED

PLIERS

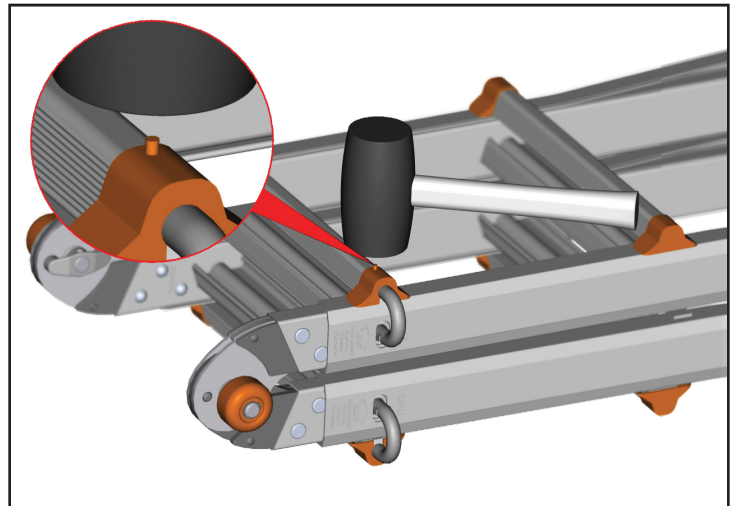
RUBBER Mallet



2. Using pliers remove and discard old rung cap.



3. Insert the new slotted rung cap.



4. Using a rubber mallet, strike the mandrel squarely until it is flush with the rung cap. Repeat steps for remaining rung caps.

Unslotted Rung Cap

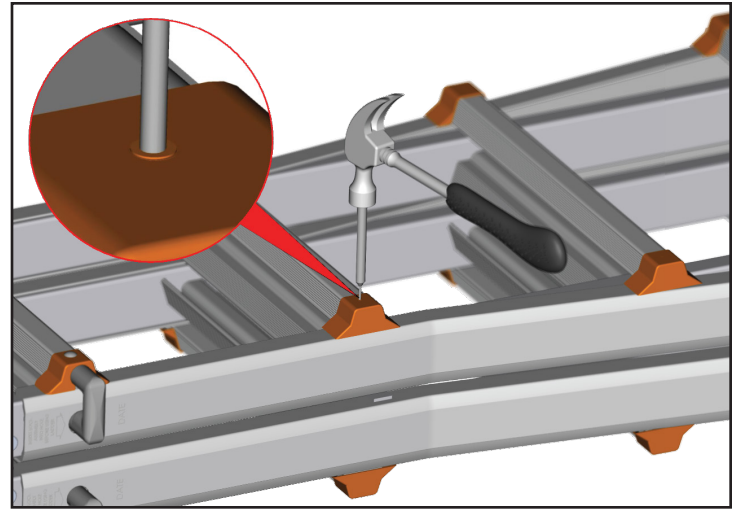
TOOLS NEEDED

HAMMER

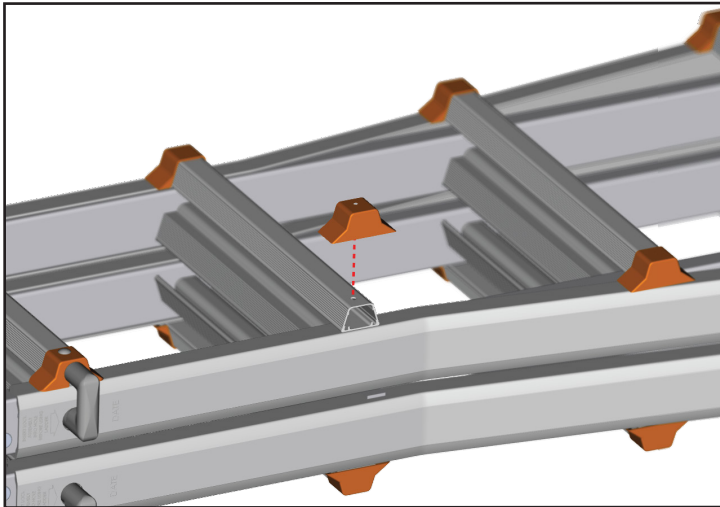
3/16" PUNCH



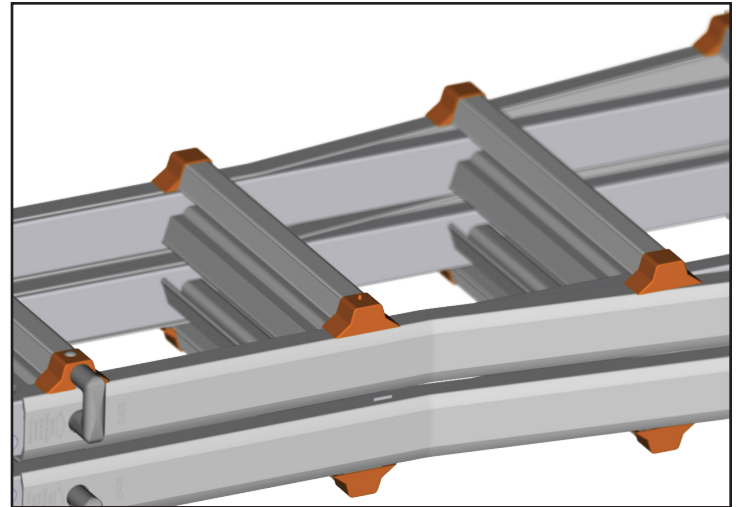
RUBBER MALET



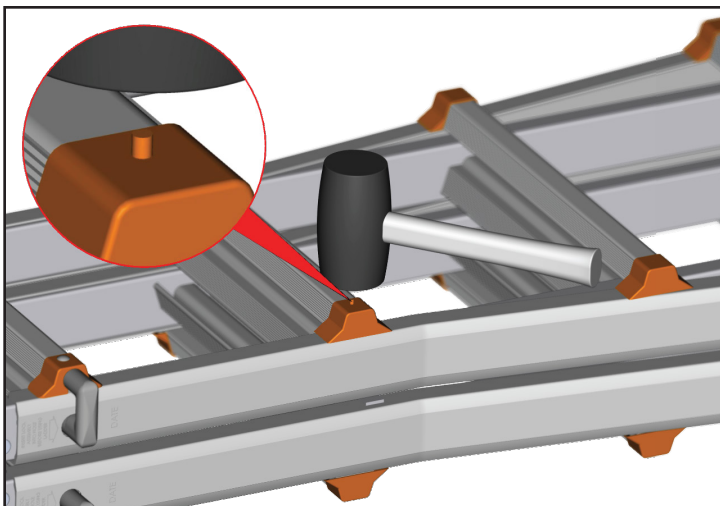
2. Using a 3/16" punch and a hammer, drive out the mandrel holding the old rung cap in place.



3. Remove and discard the old rung cap. Lean ladder to its side and dump out the mandrel.



4. Insert the new rung cap.

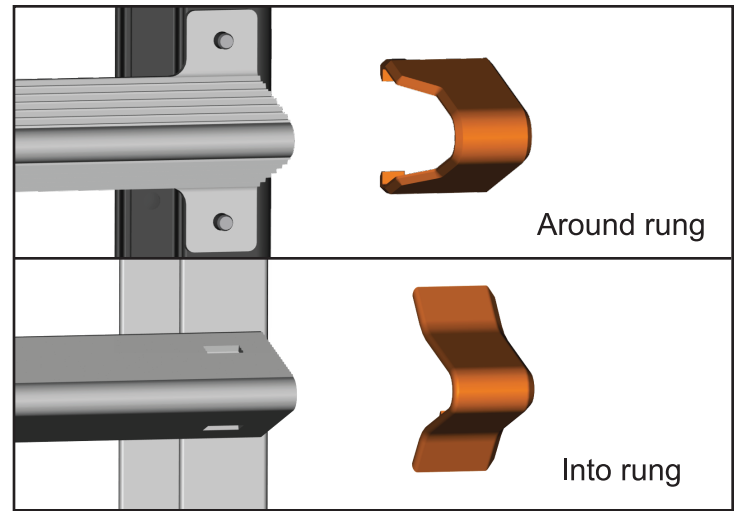


5. Using a rubber mallet, strike the mandrel squarely until it is flush with the rung cap. Repeat steps for remaining rung caps.

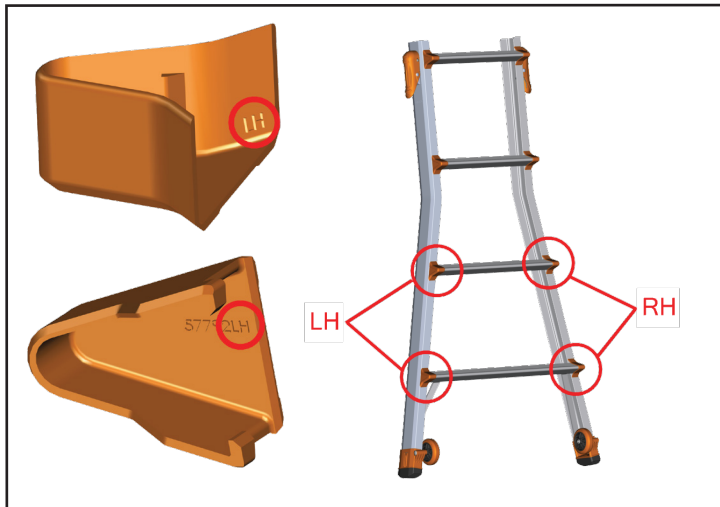
Snap-on Rung Cap

TOOLS NEEDED

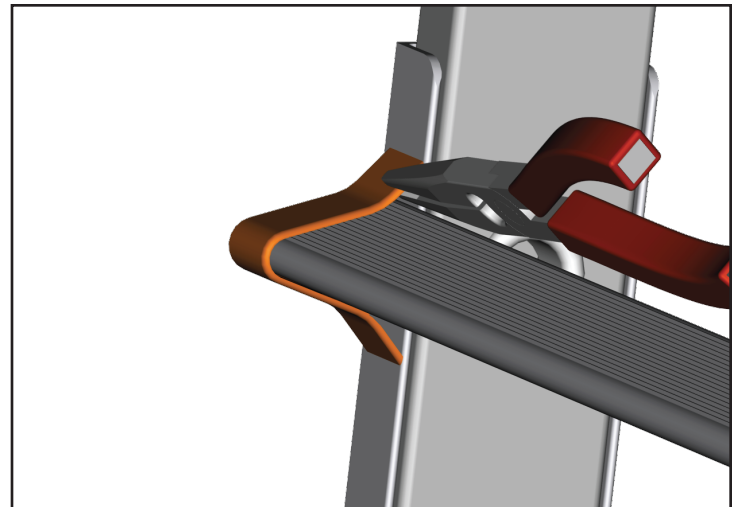
PLIERS



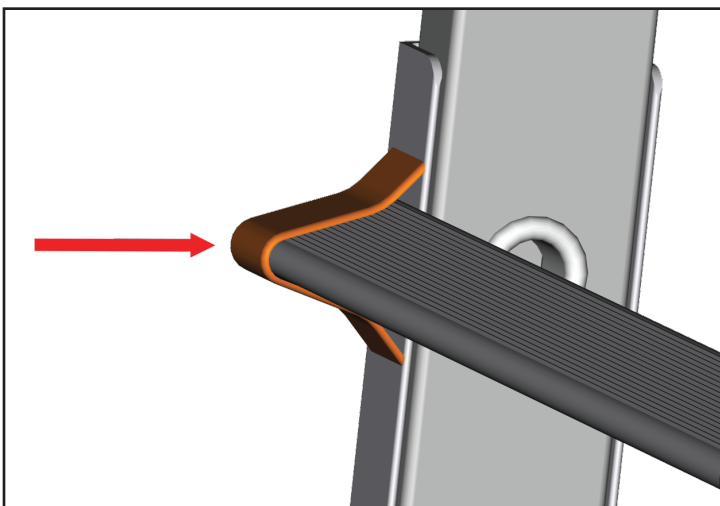
2. Depending on model, the rung cap may clip around the rung or clip into the rung.



3. Identify the new angled rung caps for the flared section, they are marked LH or RH on the inside of the cap.



4. Using pliers remove and discard the old rung cap.



5. Push the new rung cap in place, making sure it snaps in securely. Repeat steps for remaining rung caps.